

How to start the Tempest



NB

You will also find instructions on the front left hand side of the machine on how to operate the Tempest.

1



Unlock bonnet clips, lift lid and check pump oil. Replenish as required.

2



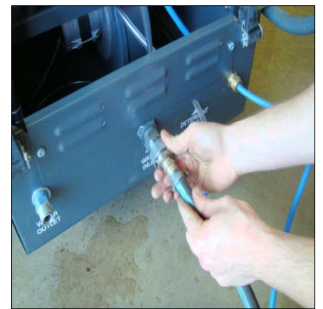
Check fuel level and replenish as required.

3



Unwind power lead and plug into mains. NB not an extension lead

4



Connect to mains water by pulling back inlet and pushing hose on.

5



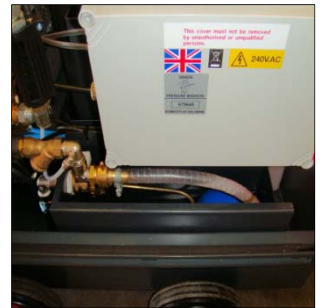
Connect MVG High pressure hose. Push I MVG nipple & tighten nut

6



Connect hose to trigger – ensure correct lance for hot water is used.

7



Turn on mains water. Water tank will begin to fill inside machine.

8



NB - On first use check water valve shuts off water correctly.

9



Shut down lid and push button to turn pump on to get cold water.

10



For hot water push button and hot water will filter through.

11



NB – the longer you wait the hotter the water will be to a max temp of 93°C

NB

Ensure when you have finished with detergent that the valve is turned off to prevent air being sucked into machine and reducing pressure.

12



For detergent. Insert detergent pipe into chemical drum.

14



When finished switch off hot water and run until water is cold..

16



Unplug and re-wind electrical cable around handle and reconnect bonnet clips

13



Ensure hot water on. Adjust detergent valve accordingly.

NB

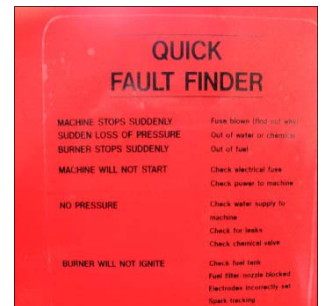
Switch off water at mains. Continue running until the machine is empty of cold water. This will ensure that during a cold snap the water does not freeze in the machine causing damage.

15



Release any pressure in hose by squeezing trigger and disconnect.

NB



For faults refer to the instruction panel on the front right hand side of the machine prior to calling for technical assistance.